

UBL6H



Light Efficiency:

35 Lumen/Watt

Light Quality:

CRI: 63.6

Color Temperature:

8133 K

Output: 904 lm

Peak: 9408 cd

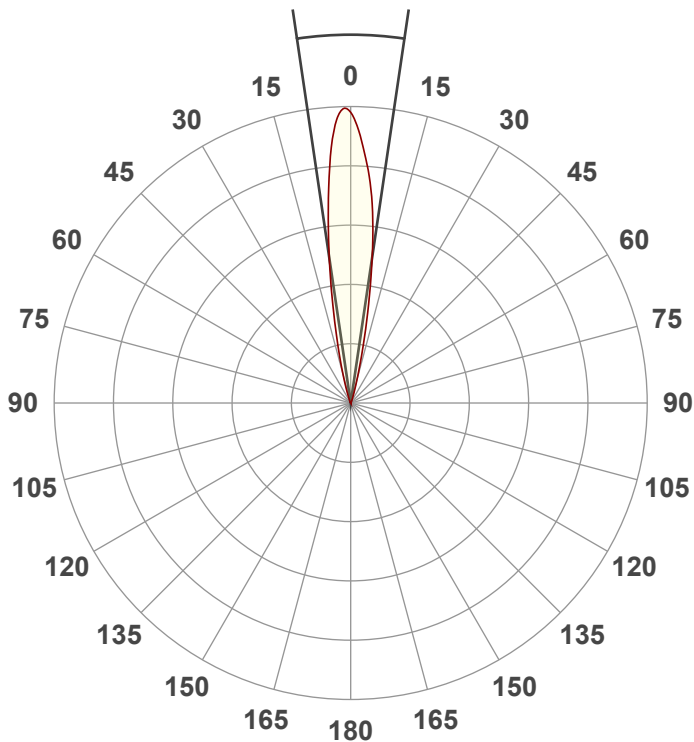
Power: 26.2 W

PF: 0.57



Beam Angle

16.8°



Test:

Full ON

Date:

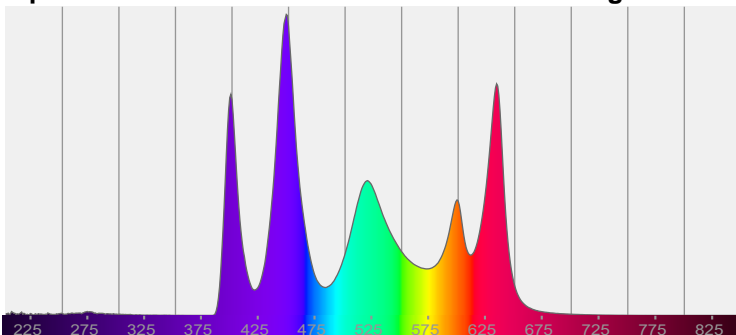
2/1/2024

Note:

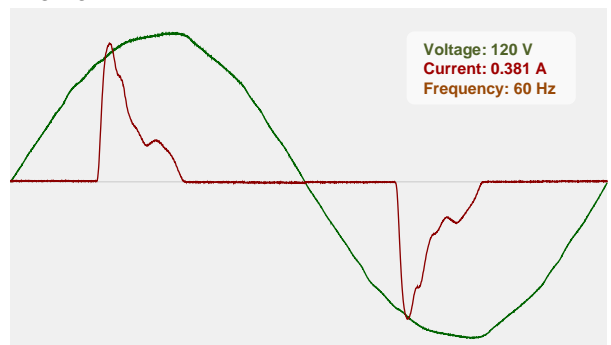
CIE 1931
x: 0.305
y: 0.271

Spectra

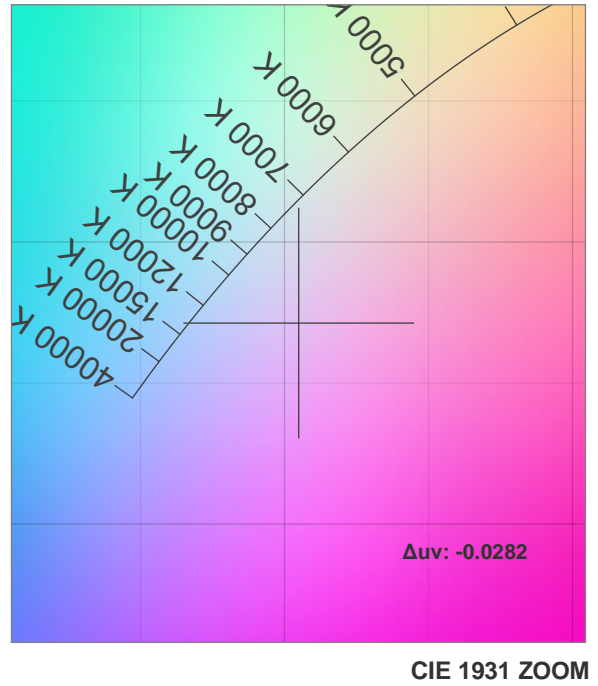
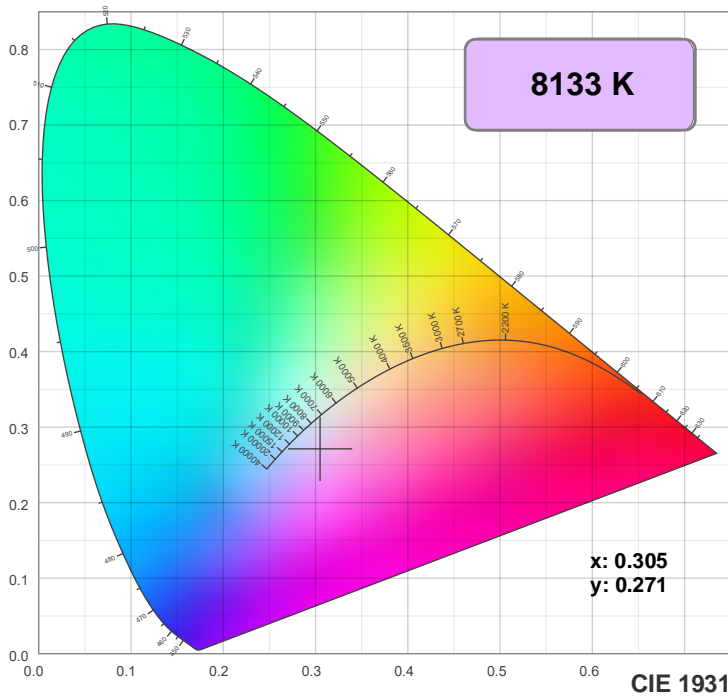
Dominant Wavelength: 360nm



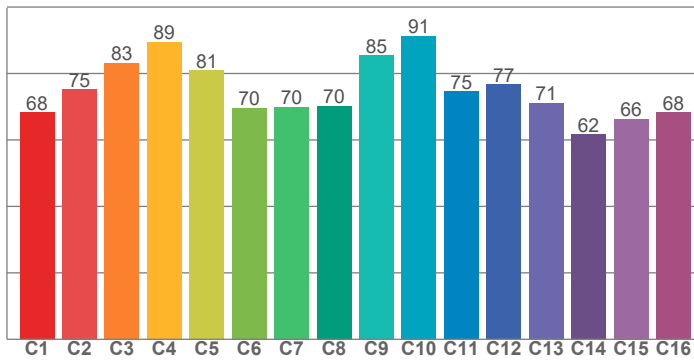
Power



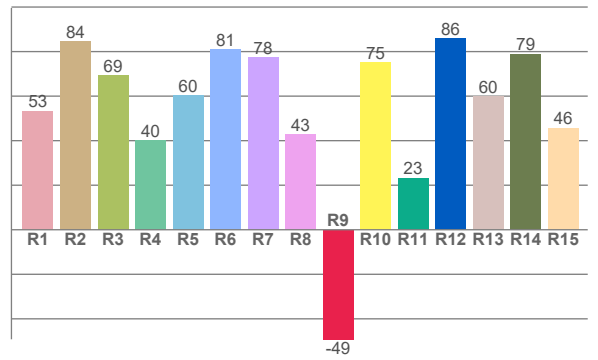
Color Details



TM30: 76.7



CRI: 63.6 (R1-R8)



CRI R values, only R1-R8 are used to calculate final CRI value

R1	R2	R3	R4	R5	R6	R7	R8	R9	R10	R11	R12	R13	R14	R15
53.4	84.4	69.2	40.1	60.3	80.8	77.5	42.8	-49.2	75.1	23.3	86.1	60.1	79.0	45.8

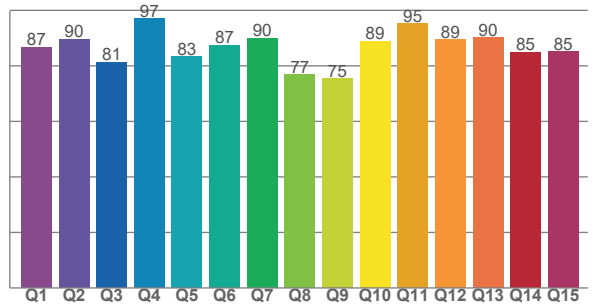
TM30 C values, 16 binned values out of total of 99 C values

C1	C2	C3	C4	C5	C6	C7	C8	C9	C10	C11	C12	C13	C14	C15	C16
68.3	75.3	83.1	89.5	81.0	69.7	69.9	70.3	85.4	91.3	74.6	76.7	71.2	61.7	66.4	68.2

CQS Q values

Q1	Q2	Q3	Q4	Q5	Q6	Q7	Q8	Q9	Q10	Q11	Q12	Q13	Q14	Q15
86.8	89.5	81.4	97.1	83.3	87.5	90.0	76.7	75.3	89.0	95.2	89.5	90.1	84.9	85.1

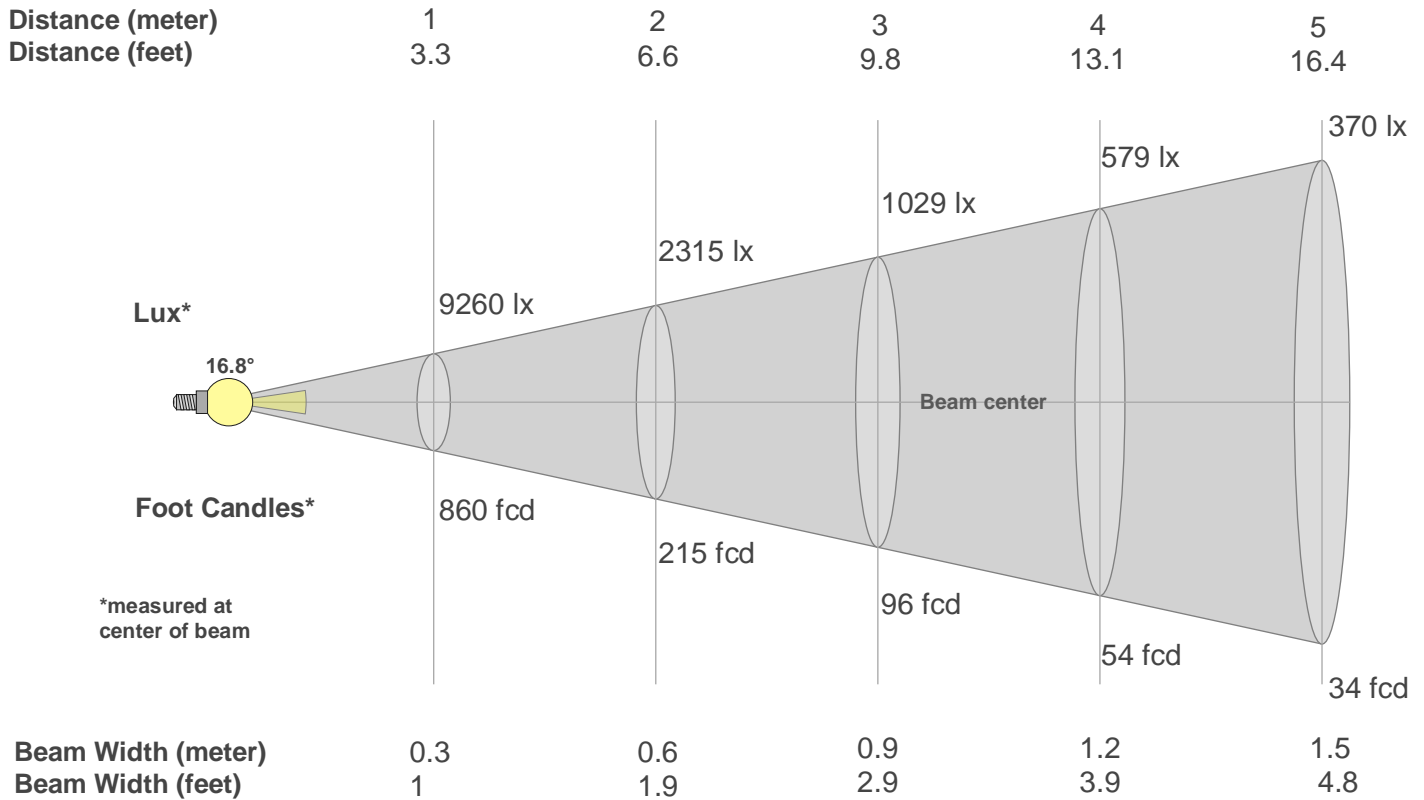
CQS: 85.6



Color Parameters

Color Temperature	Color Rendering Index	Red Component	Color Fidelity	Color Gamut	Color Quality Scale	Color Coordinate CIE 1931	Color Coordinate CIE 1931	Color Coordinate	Color Coordinate	Color Deviation from Black Body
CCT	CRI	CRI R9	TM30 Rf	TM30 Rg	CQS	x	y	u	v	Δuv
8133 K	63.6	-49.2	76.7	121.9	85.6	0.305	0.271	0.216	0.288	-0.0282

Beam Details



Beam Intensities from 1-20m

m	1	2	3	4	5	6	7	8	9	10	11	12	13	14	15	16	17	18	19	20
ft	3.3	6.6	9.8	13.1	16.4	19.7	23	26.2	29.5	32.8	36.1	39.4	42.7	45.9	49.2	52.5	55.8	59.1	62.3	65.6
lx	9260	2315	1029	579	370	257	189	145	114	93	77	64	55	47	41	36	32	29	26	23
fcd	860.3	215.1	95.6	53.8	34.4	23.9	17.6	13.4	10.6	8.6	7.1	6	5.1	4.4	3.8	3.4	3	2.7	2.4	2.2

Intensities in 0° C-plane

0°	1°	2°	3°	4°	5°	6°	7°	8°	9°	10°	11°	12°	13°	14°	15°	16°	17°	18°	19°
9260	9371	9252	8962	8383	7621	6762	5877	5027	4203	3428	2745	2140	1682	1293	957	713	527	378	282
100%	101%	100%	97%	91%	82%	73%	63%	54%	45%	37%	30%	23%	18%	14%	10%	8%	6%	4%	3%

Intensities in 90° C-plane

0°	1°	2°	3°	4°	5°	6°	7°	8°	9°	10°	11°	12°	13°	14°	15°	16°	17°	18°	19°
9260	9371	9252	8962	8383	7621	6762	5877	5027	4203	3428	2745	2140	1682	1293	957	713	527	378	282
100%	101%	100%	97%	91%	82%	73%	63%	54%	45%	37%	30%	23%	18%	14%	10%	8%	6%	4%	3%

Intensities in 180° C-plane

0°	1°	2°	3°	4°	5°	6°	7°	8°	9°	10°	11°	12°	13°	14°	15°	16°	17°	18°	19°
9260	8947	8550	8070	7588	7071	6487	5780	5020	4203	3434	2711	2058	1545	1116	799	593	435	328	258
100%	97%	92%	87%	82%	76%	70%	62%	54%	45%	37%	29%	22%	17%	12%	9%	6%	5%	4%	3%

Intensities in 270° C-plane

0°	1°	2°	3°	4°	5°	6°	7°	8°	9°	10°	11°	12°	13°	14°	15°	16°	17°	18°	19°
9260	8947	8550	8070	7588	7071	6487	5780	5020	4203	3434	2711	2058	1545	1116	799	593	435	328	258
100%	97%	92%	87%	82%	76%	70%	62%	54%	45%	37%	29%	22%	17%	12%	9%	6%	5%	4%	3%

Beam Angle 50%	Field Angle 10%	Cutoff Angle 2,5%	Intensity Ratio in 120° Cone	Intensity Ratio in 90° Cone
16.8°	29.6°	39°	100.0%	100.0%